

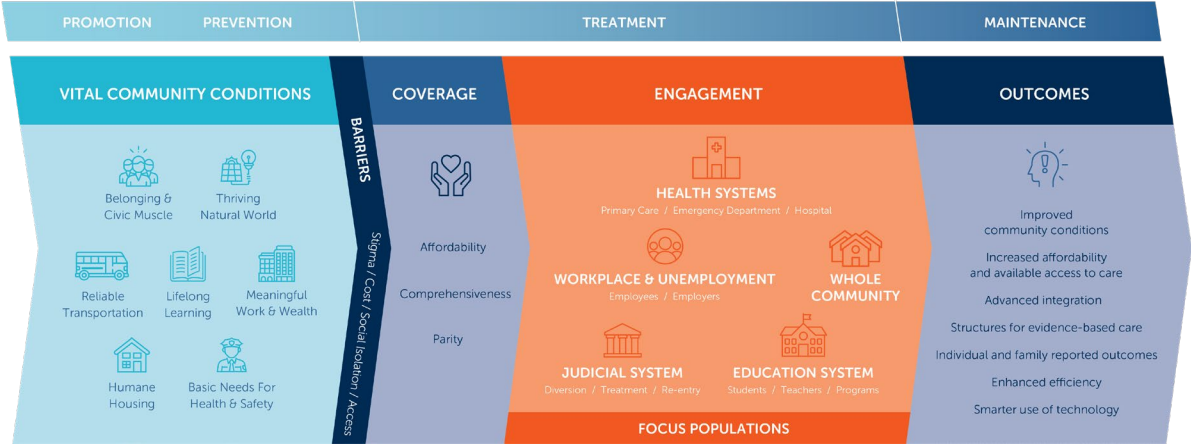


# Framework for Excellence in Mental Health and Well-Being

## Version 2.0 - DRAFT



# Revised Framework



Framework Version 1.0

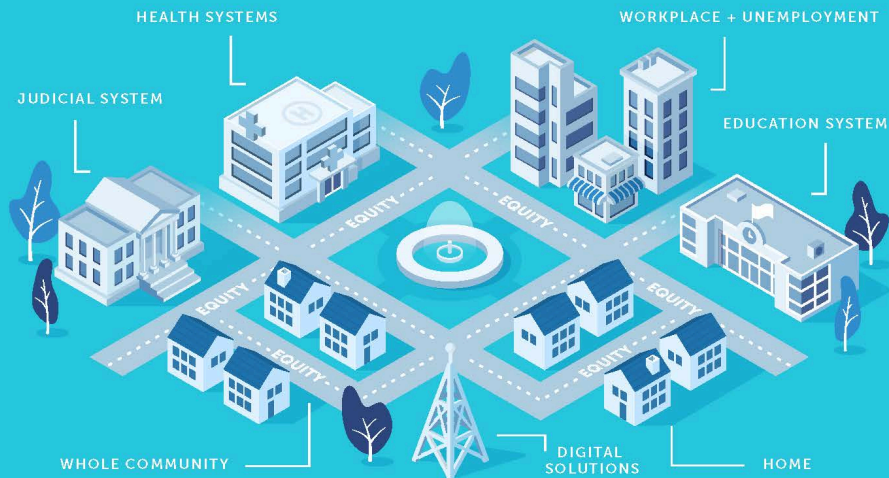


Framework Version 2.0

# COMMUNITY



# CARE



# COVERAGE

PARITY, COMPREHENSIVENESS, AFFORDABILITY

## What Changed?

1

Incorporated feedback and conducted additional stakeholder interviews to further define how framework will be used by Well Being Trust and Providence.

2

Realigned to focus more explicitly on Community, Care, and Coverage in a less-linear framework.

3

Engaged new design partner to bring framework to life with focus on intersection of systems.

4

Developed modular solution that allows for future “double-click” scenarios (e.g. Healthcare System, Judicial System).



# COMMUNITY

- Vital Community Conditions language has been shortened to Community.
- Conditions still enumerated to achieve both density and simplicity.
- Diverse members demonstrate inclusivity across spectrum of community.

LIFELONG LEARNING

BASIC NEEDS  
FOR HEALTH + SAFETY

RELIABLE TRANSPORTATION



BELONGING + CIVIC MUSCLE

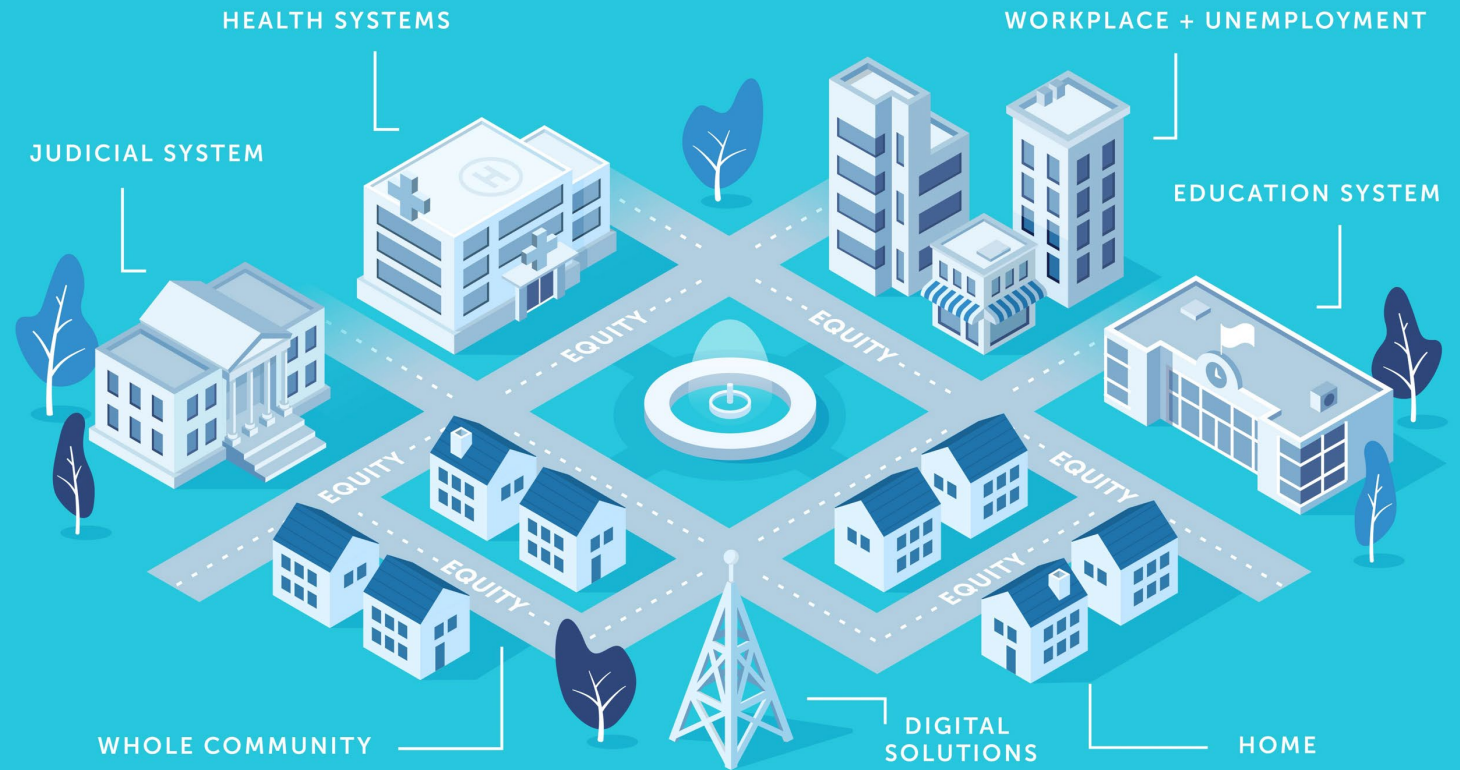
HUMANE HOUSING

MEANINGFUL  
WORK + HEALTH

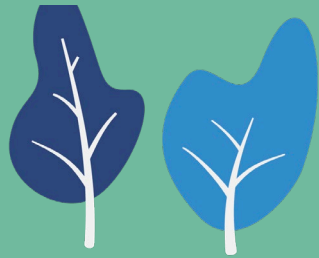
THRIVING NATURAL WORLD

# CARE

- Equity is now explicitly part of every aspect.
- Barriers and needs of disproportionately affected populations will be addressed in the “double-click” scenarios.
- Double-click scenarios also allow for comprehensiveness of different systems that cannot be achieved within the high-level framework.



# NEXT STEP: DOUBLE-CLICK FOCUS ON SYSTEMS



WHOLE COMMUNITY  
HEALTH CARE SYSTEM



JUDICIAL SYSTEM  
EDUCATION SYSTEM  
WORKPLACE